



December 12, 2025

LAURIE BRIGGS-DUDLEY  
CLERK  
EAGLE TOWNSHIP  
13600 S BAUER RD  
EAGLE, MI 48822-9513

Greetings,

ITC invites you to attend one of seven upcoming Community Listening Sessions in your area **between January 26 and February 5, 2026** related to the Oneida-Sabine Lake Project, approximately 50 miles of 345-kilovolt high voltage electric transmission line in the Mid-Michigan area.

This project is part of a larger Long Range Transmission Planning effort coordinated by the Midcontinent Independent System Operator, the regional system-planning organization covering 15 US states and the Canadian province of Manitoba, whose mission is to work collaboratively with stakeholders to plan for a more reliable and cost-effective power grid. This project will be critical to the future of the region.

The **enclosed map shows the preliminary route network**. At this stage, we are gathering input from the community and stakeholders to help us evaluate and refine these preliminary route options. Additional opportunities to provide feedback will follow before our application is submitted to the Michigan Public Service Commission.

The meetings will be an open house-style format, where you can drop in any time during the hours listed on the back. No formal presentation will be given, so feel free to come and go as you are able. These events will offer you the opportunity to learn more about the project, meet in person with project staff and provide your input in the early planning stages of the project.

**The meetings will be held at the locations and times listed on the back.** Light refreshments will be provided.

## Community Listening Sessions Dates & Locations

<p><b>Monday, Jan. 26<sup>th</sup> 12-7p</b>                  Okemos Event Center                  2187 University Park Drive                  Okemos, MI 48864</p>	<p><b>Tuesday, Jan. 27<sup>th</sup> 12-7p</b>                  Okemos Event Center                  2187 University Park Drive                  Okemos, MI 48864</p>	<p><b>Wednesday, Jan 28<sup>th</sup> 12-7p</b>                  Lansing Community College                  West Campus Showroom                  M119-122                  5708 Cornerstone Dr.                  Lansing, MI 48917</p>
<p><b>Thursday, Jan 29<sup>th</sup> 12-7p</b>                  Hidden Gem Event Center                  4230 Charlar Dr.                  Holt, MI 48842</p>	<p><b>Tuesday, Feb. 3<sup>rd</sup> 12-7p</b>                  Brookshire Golf Course                  Clubhouse                  205 W. Church St.                  Williamston, MI 48895</p>	<p><b>Wednesday, Feb 4<sup>th</sup> 12-7p</b>                  Conway Township Hall                  8015 N. Fowlerville Rd.                  Fowlerville, MI 48836</p>
<p><b>Thursday, Feb. 5<sup>th</sup> 5-7p</b>                  Fowlerville High School                  Cafeteria                  700 N. Grand St.                  Fowlerville, MI 48836</p>		

RSVP at [burnsmcd.cventevents.com/ITCOSL](https://burnsmcd.cventevents.com/ITCOSL) or by scanning the QR code below.

We look forward to meeting with you at one of the upcoming Community Listening Sessions and we will continue to update you on the project as it moves through the process. If you have any questions, please don't hesitate to reach out via email [OSL@ITCtransco.com](mailto:OSL@ITCtransco.com) or our toll-free number **1-800-368-7640**.

Sincerely,



Ben Tirrell  
 Regional Manager

Encl: map, project fact sheet

SCAN HERE TO RSVP



# ONEIDA-SABINE LAKE

## 345 kV Station and Line Build

### PROJECT OVERVIEW

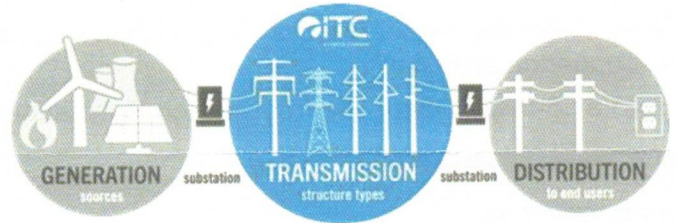
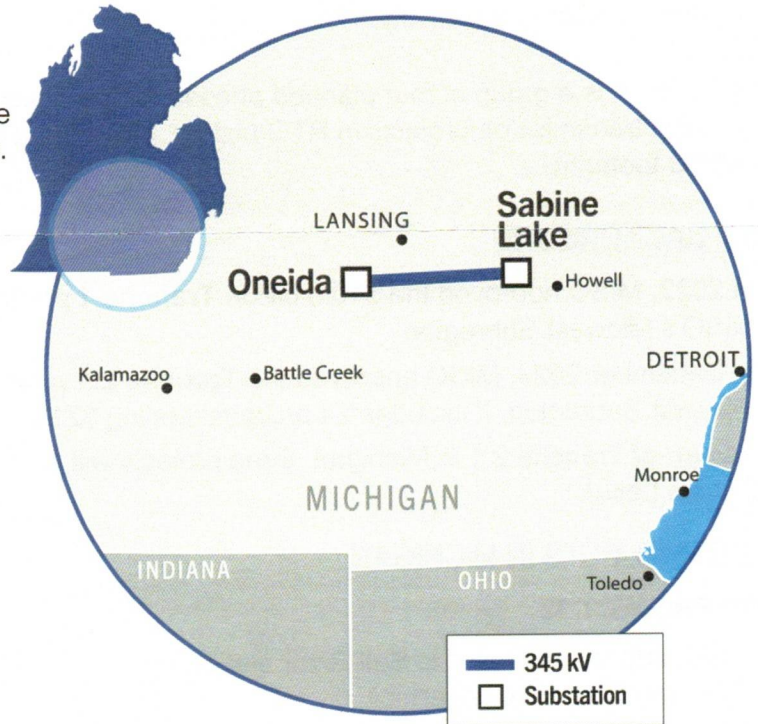
ITC Michigan is committed to serving customers and communities by providing safe, secure, reliable electricity transmission service to meet their needs.

For the Oneida to Sabine Lake transmission project, ITC will:

- Build a 345 kV station in Livingston County (Sabine Lake)
- Build a 50-mile, 345 kV line from Oneida station to Sabine Lake station

These projects are critical to improving the reliability and economical delivery of energy. As power producers transition to a variety of generation sources supporting our modern economy, benefits will include:

- Increased regional transmission capacity, promoting economic growth.
- Enhanced grid security and more system resilience during extreme weather events and potential cyber attacks.
- Savings for ratepayers and supporting state energy goals.
- Potentially attracting new businesses and high-growth industries.



### ABOUT ITC

ITC Holdings Corp., through subsidiaries ITC *Transmission* and Michigan Electric Transmission Company, LLC (METC), owns and maintains nearly 9,100 circuit miles of high-voltage electric lines throughout Michigan’s Lower Peninsula. As the nation’s largest independent electric transmission company, ITC focuses solely on electric transmission to enhance reliability, relieve electric transmission congestion and connect all energy resources to customers in a non-discriminatory manner. ITC has been making significant investments in Michigan’s transmission grid to improve reliability, increase safety and lower the overall cost of delivered energy.

DECEMBER 2025



**FOR THE GREATER GRID**

27175 Energy Way | Novi, Michigan 48377  
 877.ITC.ITC9 (877.482.4829) | [www.MIFutureGrid.com](http://www.MIFutureGrid.com)

# LONG-RANGE TRANSMISSION PLAN (LRTP)

## WHAT IS LONG-RANGE TRANSMISSION PLANNING (LRTP)?

In 2022, the Midcontinent Independent System Operator (MISO) initiated a project known as Long-Range Transmission Planning (LRTP). As an independent, non-profit Regional Transmission Organization (RTO), MISO acts as an “air traffic controller” for the regional grid with the mission of working collaboratively with electricity stakeholders across 15 US states and the Canadian province of Manitoba. 45 million people depend on MISO to generate and transmit the right amount of electricity every minute of every day – reliably, dependably and cost-effectively.

MISO’s LRTP is a group of four planned phases, or tranches. Overall, the LRTP project is the largest portfolio of long-range transmission projects in RTO history, providing a roadmap for future transmission investment across the MISO footprint.

## LRTP BACKGROUND

- In 2022, MISO approved the \$10.3 billion **Tranche 1** portfolio, which includes 18 transmission projects in MISO’s Midwest Subregion.
- In December 2024, MISO approved the **Tranche 2.1** portfolio, which also addresses transmission in MISO’s Midwest Subregion. It includes 24 projects totaling \$21.8 billion.
- As part of Tranche 2.1 in Michigan, three projects will be built: LRTP 32, LRTP 33 and LRTP 34 (Oneida-Sabine Lake).

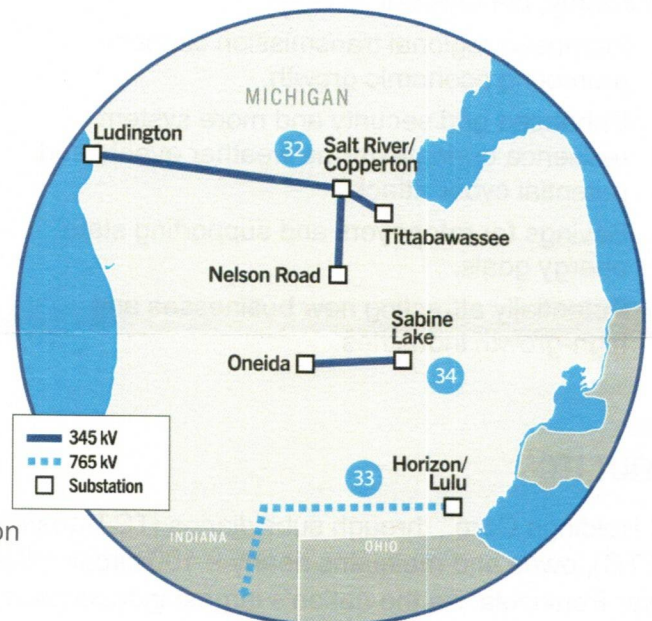
## OTHER PROJECTS IN MICHIGAN

### LRTP PROJECT 32

- Add 345kV equipment to Salt River station in Midland County (Copperton)
- Build a 159-mile 345 kV line from Ludington station to Copperton station
- Build a 40-mile, 345 kV line from Tittabawassee station to Copperton station
- Build a 55-mile, 345 kV line from Nelson Road station to Copperton station

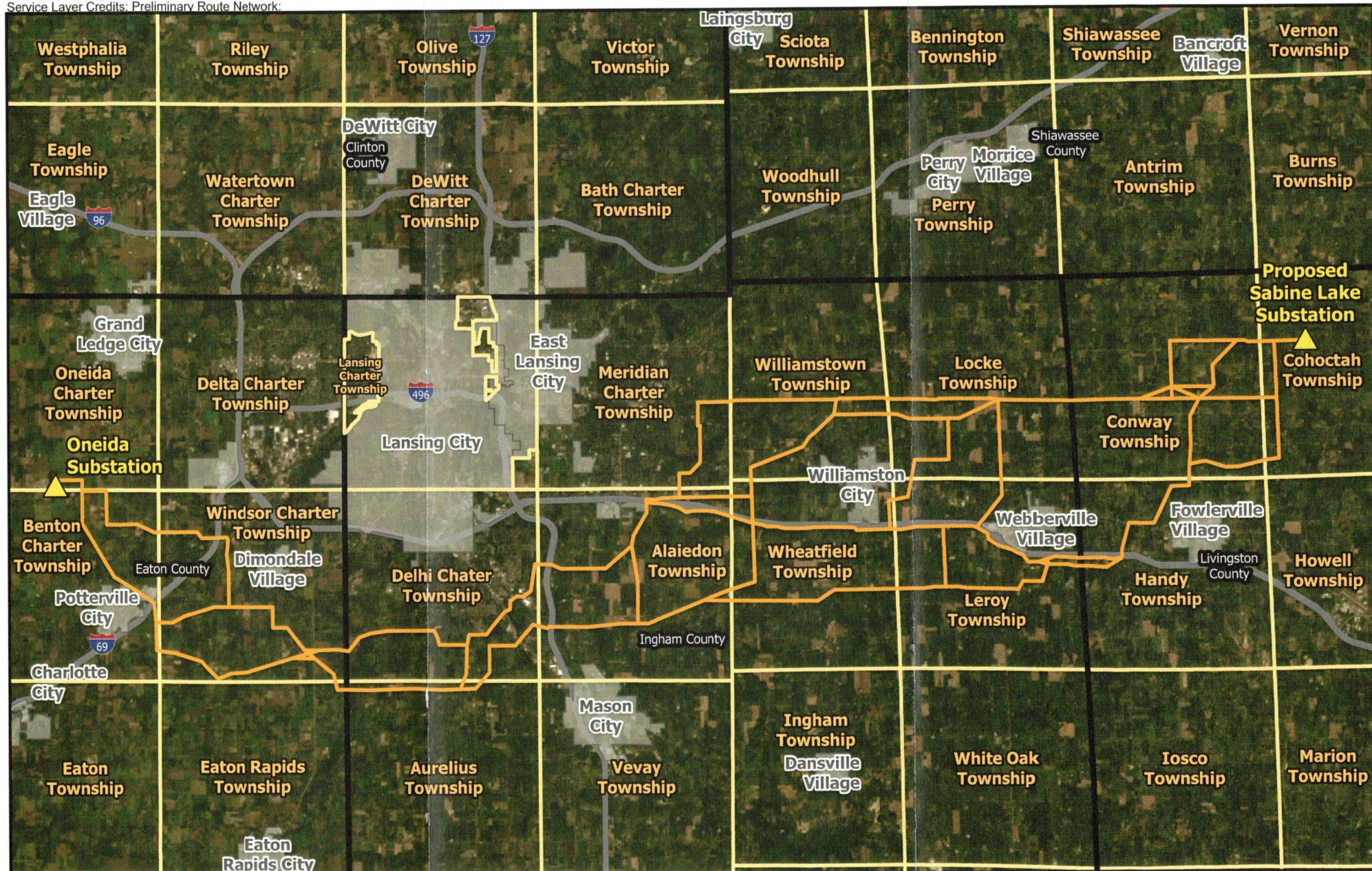
### LRTP PROJECT 33

- Add 765 kV equipment to Lulu station in Monroe County (Horizon)
- Build a 68-mile, 765 kV line segment from Horizon station to the Indiana/Michigan border

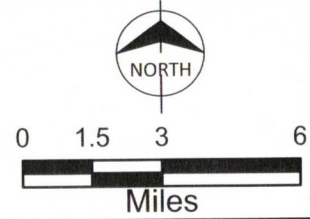


## WHAT ARE NEXT STEPS?

ITC is evaluating route options for these projects. As part of this process, ITC solicits feedback from the public, agencies, and municipalities. For more information, visit <http://www.MIFutureGrid.com>



- Substation
- Township Boundary
- Preliminary Route Network
- Highway
- County Boundary
- Municipal Boundary



**METC**  
 Oneida to Sabine Lake  
 345 kV Transmission Line  
 Route Network Overview

\*The route network, all route segments and proposed substation location are preliminary and subject to change.\*